

EZ **PnP** ***EZDigiMagic***

Digital Image Backup Device

MODEL:DM320



User's Manual

Table of Contents

1. Introduction	P.2
1-1. Basic Configuration	
1-2. Product Features	
2. Product Tour	P.3
2-1. Front Bezel	
2-2. Rear Side	
2-3. Top Bezel	
2-4. Slot Adaptor Usage	
3. Operating Instructions	P.5
3-1. Standalone Operation	
3-2. PC Link Operation	
3-3. DM320 Disconnection from PC	
4. Important Notes	P.8
5. Troubleshooting Guide	P.9
6. Technical Support	P.11
7. Specifications	P.12
8. Product Application Scope	P.13

1. Introduction

Thank you for purchasing our EZDigiMagic DM320. EZDigiMagic enables you to produce a backup copy of digital photos directly from your camera's memory card into a CD-R or CD-RW disc. One touch operation and no need for PC makes using EZDigiMagic a snap. EZDigiMagic can also be connected to a PC to be used as a flash memory card reader or as CD burner. EZDigiMagic makes digital photography EZ.

Warning: Please be certain that all data on the memory card has been successfully backed up onto the disc before erasing the contents of the memory card. The manufacturer and sellers of EZDigiMagic are not responsible for any data lost from the memory card.

1-1. Basic Configuration

Please review contents to ensure your EZDigiMagic is complete.

- EZDigiMagic DM320 main unit
- Quick Start
- User's Manual
- 1 disc-USB 2.0 device driver (for Windows 98/SE/2000 XP3, Mac OS10.x and later). Before Install the driver, please read the Read me file in the driver.
- 1 disc-CD burner software
- 1 blank CD-R disc
- USB 2.0 connection cable
- CF Memory Card Slot Adaptor
- AC Power Adaptor
- AC Power Cord

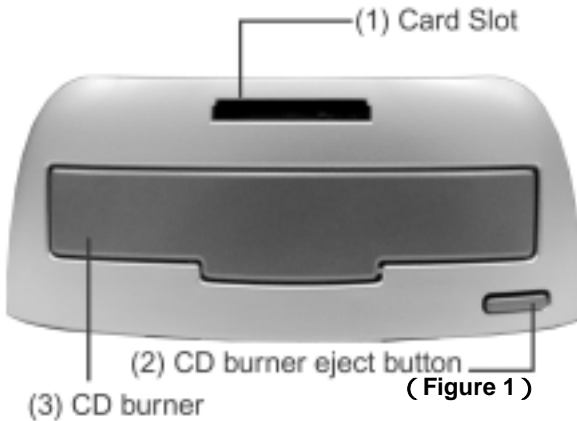
1-2. Product Features

EZDigiMagic supports most flash memory cards currently on the market.

- Stand-alone operation, no PC needed.
- One-touch back up operation.
- Multi-session capability allows for backing up multiple memory cards into a single CD.
- Can double as a memory card reader and CD burner when connected to a PC.
- Uses high speed USB 2.0 interface for PCs.
- No additional device driver needed under the Windows ME/XP environment.

2. Product Tour

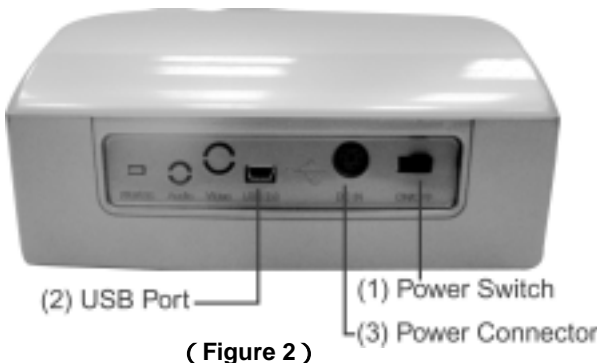
2-1. Front Bezel



- (1) **Card Slot:** You may insert Compact Flash (CF) card or MicroDrive card directly into slot. All other memory cards, Smart Media (SM), Memory Stick (MS), Secure Digital (SD) or, Multi Media Card (MMC) must be used with the slot adaptor. (See section 2-4).
- (2) **CD burner eject button**
- (3) **CD burner:** Press CD burner eject button in order to release CD tray. Place blank CD-R or CD-RW disc in tray and press the eject button again to retract the CD tray automatically.

to release CD tray. Place blank CD-R or CD-RW disc in tray and press the eject button again to retract the CD tray automatically.

2-2. Rear Side



- (1) **Power Connector:** Insert the power connector from the AC adaptor into this socket. Plug the AC power cord into the wall AC outlet. Turn the Power Switch (3) on the EZDigiMagic to the "ON" position.
- (2) **USB Port:** Plug the USB 2.0 cable into this socket and connect the other end to your PC.
- (3) **Power Switch:** Slide the switch toward the left to the "ON" position to start the unit; or slide the switch toward the right to the "OFF" position to shut down the unit.

your PC.

- (3) **Power Switch:** Slide the switch toward the left to the "ON" position to start the unit; or slide the switch toward the right to the "OFF" position to shut down the unit.

2-3. Top Bezel



(Figure 3)

(1) Main function **Copy** key: One-Touch operation to start the back up operation.

(2) **Power Indicator:** The green LED will illuminate once the power source is connected and the power switch is in the “on” position.

(3) **OK:** Once EZDigiMagic is ready to copy, the green colored OK LED will stop blinking. Then memory card is inserted and a blank CD is placed in the burner. After the copy operation is successfully completed, the indicator will change back to a green light and the buzzer will sound a single beep (about 2 seconds).

(4) **Write:** The actual copy operation starts when the green colored Write LED changes to a blinking Orange light.

(5) **Disc Full:** This indicator will light up and the buzzer will sound three short beeps if there is not enough remaining

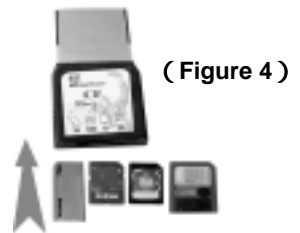
capacity on the disc for copying the data from the memory card.

(6) **Fail:** This indicator will light up red if the copy operation can not be completed successfully, and the buzzer will sound three short beeps.

2-4. Slot Adaptor Usage

The 4-in-1-memory slot adaptor is included with the unit (see Figure 4).

- (1) When using the Smart Media card in the 4-in-1 slot adaptor, make sure the gold-finger contact for the Smart Media card is facing up.
- (2) When using MS, SD, and MMC memory cards, the gold finger contact must be facing down.
- (3) Once the memory card is inserted correctly in the adaptor, you can then plug the adaptor into the card slot on the DM320. (See Figure 5).
- (4) Once the backup operation is completed, the adaptor or the memory card may be removed.



(Figure 4)



(Figure 5)

3. Operating Instructions

To ensure maximum usage satisfaction and extended product life, please follow the below operating instructions:

3-1. Standalone Operation

- (1) Make sure the power source is connected correctly.
- (2) Turn on the power switch. All four indicators on the top bezel will light up and the buzzer will sound a long beep (about 2 seconds). The unit will be initialized and reset for all functions.
- (3) Once the OK green indicator is on and stops blinking, the unit enters the standby mode. Press the CD burner eject button to eject the disc tray, load blank CD-R or CD-RW on tray. Press the ejector button a second time to close tray.
- (4) Insert CF or MicroDrive memory card directly into the card slot. All other memory cards such as SM, SD, MS, and MMS need to be inserted into the adaptor before inserting into DM320 card slot. (See section 2-4)
- (5) Once memory card and the blank disc are in position (OK indicator is green and steady), press the **Copy** key to start the copy operation. During the disc burning process, the Write indicator will blink yellow.
- (6) Once the copy operation is complete, the OK indicator light will turn green and the buzzer will sound a long beep (about 2 seconds) and the disc tray will slide out automatically.
- (7) To back up more than one memory card on the same CD, complete the back up of one memory card, and remove the memory card. Insert the subsequent memory card as instructed in 3-1(4) and 2-4, and repeat the back up operation.

3-2. PC Link Operation

- (1) Connect the EZDigiMagic DM320 to a PC using the included USB 2.0 cable.

PC Users:

If you are using Windows XP or ME, you do not need to install the USB device driver in most cases. If you are using Windows 98/98SE/2000, please follow the following steps to install the USB 2.0 device driver:

Close all other programs. Insert the device driver CD in your CD-ROM drive and follow the instructions to complete the installation and restart the computer.

Note: If your PC does not have a USB 2.0 port, you need to install a USB 2.0 add-on card and device driver first.

MAC Users:

If you are using Mac OS, please follow the procedures below for installing the USB 2.0 device driver:

Stop all other programs. Insert the CD into the CD-ROM drive. Follow the Instructions on the screen to complete the installation and restart the computer.

Note: If your computer does not support USB 2.0 port, you will need additional hardware installed on the computer first.

- (2) Turn on the power switch. All four indicators on the top bezel will light up and the buzzer will sound a long beep (about 2 seconds). The unit will be initialized and reset for all functions.
- (3) The PC will detect the presence of the new hardware and display the new device in the desktop screen of the PC. Follow the on-screen instructions to complete the installation. The PC will recognize the device automatically after the initial installation.
- (4) Once the PC link is established, the **Copy** key on the top bezel will be de-activated since the unit is now functioning as a card reader and CD burner.
- (5) The PC will have two new icons located in My Computer in the desktop menu: "removable HDD" and "optical disk drive".
- (6) "Removable HDD" functions as a card reader for retrieving the information in the memory card. (See Section 3-2-1 for details)
- (7) "Optical disk drive": functions as a CD burner for recording information onto CD-R or CD-RW discs through proper CD burner software. (See Section 3-2-2 for details).

3-2-1. Using DM320 as a Card Reader

- (1) Once you have successfully installed the DM320 to a PC, a new icon "Removable HDD" will appear in My Computer. This icon will contain the data for the memory card.
- (2) Insert memory card into the card slot (for CF and MicroDrive card only, all others must be inserted into the slot adaptor first before inserting into the card slot in DM320).
- (3) You can then copy the data from the memory card onto other storage devices in the computer or copy the information from the computer into the memory card by following the file copying procedures in your operating system.
- (4) During the read/write process, all four indicator lights (OK/Write, Battery Low, Disc Full, Fail) will blink at the same time.

3-2-2. Using DM320 as a CD Burner

- (1) Once you have successfully installed the DM320 to a PC, a new icon “Optical Disc Drive” will appear in My Computer.
- (2) The DM320 unit functions like an external CD burner. Using the CD burner software included in your EZDigiMagic package, you can record data from your computer onto the CD-R or CD-RW discs by following the directions in the software.
- (3) During the CD burning operation, all four indicators (OK, Write, Disc Full, and Fail) will blink at the same time.

3-3.DM320 Disconnection from PC

- (1) Using your PC, move cursor to the lower-right hand corner of the screen and click on the “Unplug or Eject Hardware” icon (as in Figure 6).
- (2) Select the functions “Stop USB CD-ROM” and “Stop USB HDD” to remove the device driver.



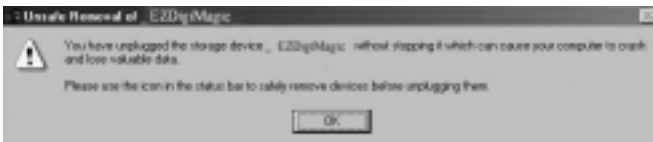
(Figure 6)

- (3) Once the message “device can now be safely removed from the system” appears as in Figure 7, you may power off the EZDigiMagic DM320 and remove the USB interface cable.



(Figure 7)

NOTE: If you do not follow the above instructions, you may see the “You have unplugged the device without stopping it which can cause your computer to crash and lose valuable data” message box as shown below in Figure 8.



(Figure 8)

- (4) Window XP users may simply power off the DM320 unit and disconnect the cable.

4.Important Notes

Please read the following notes prior to use in order to prevent damage to your EZDigiMagic.

- (1) This product will make a backup copy of the data in the memory card but will not alter or erase the data in the memory card while in the copy mode. (However, you may use the digital camera or PC-link mode to delete or change the content of the memory card.)
- (2) This product uses Multi-Session recording format for copying multiple flash memory cards into the same disc. The disc can be read by any system that supports ISO-9660 CD-ROM.
- (3) If you use CD-R/W blank discs, the disc must be formatted to ISO format. If the disc is UDF formatted, reformat the CD-R/W disc into ISO format before using as the backup disc in your EZDigiMagic.
- (4) This product uses data backup concept for recording data. For example, after the first backup operation, a folder will be created with the name "01" which will contain all data from the first memory card. The second backup operation will create a new folder "02", and so on for all subsequent backup operations until the disc is full.
- (5) You must use a blank CD-R or CD-RW disc for the first backup. You may use any CDs created by DM320 for further backup if the disc space is still available.
- (6) You cannot use another CD burner to write data onto the CDs created by DM320; or you will risk recording failure, damaging the data and the disc.
- (7) During the CD burning operation, avoid any vibration or shock to the device as damage may occur to the read/write head of the burner.
- (8) Do not power off the unit during the copy operation or CD burning, damage will occur to the backup disk.
- (9) Some memory cards may have minor compatibility issues with DM320. If the device is switched on with such memory card already inserted, DM320 may fail to initialize correctly. In such case, remove the memory card, then power on the device and re-insert the memory card.

5. Troubleshooting Guide

Problem	Solution
DM320 not working with PC	<ul style="list-style-type: none">• Check that PC USB 2.0 cable is properly connected to PC USB 2.0 port.• Make sure both units are powered up.• Has the included USB 2.0 device driver been installed? Note: If your PC uses Windows Me/XP, this step is not needed, your PC will detect the new hardware automatically.• The following operating systems can be used with the DM320 - Windows Me/XP/98/98SE/2000 XP3and Mac OS10.0 or later versions.
Disc Full indicator lights up	<ul style="list-style-type: none">• Remove the disc and replace it with another blank disc.
When backup fails, the data of memory card will not be delete	<ul style="list-style-type: none">• DM320 will backup data for your flash memory card, but will not delete the data automatically..
Can not burn the memory content onto the CD-RW disc	<ul style="list-style-type: none">• Connect DM220 to a PC.• Please Insert the blank CD-RW disc into the DM320.• Using the software reformat the blank CD-RW disc again to make sure the ISO disc format is correct.

Problem	Solution
Memory card cannot be read or backed up	<ul style="list-style-type: none">• Make sure flash memory card is inserted correctly. See 2-4 Slot Adaptor usage.• The memory card may be damaged or the data may be corrupted. Use your digital camera to check and/or format the data.• Make sure the blank disc is properly placed in the CD burner.
Backup operation fails, Fail indicator lights up and buzzer sounds three short beeps	<p>Maybe your CD-RW disc is not the ISO disc format. If the disc is UDF formatted, reformat the CD-R/W disc into ISO format before using as the backup disc in your EZDigiMagic. Please use the follow steps to make the ISO disc format.</p> <ul style="list-style-type: none">• Connect DM320 to a PC.• Please Insert the blank CD-RW disc into the DM320.• Using the software reformat the blank CD-RW disc again to make sure the ISO disc format is correct.

WARNING:

Do not attempt to disassemble the device. Please contact EZPnP to arrange for product repair. If you attempt to disassemble the device, the warranty may be voided and EZPnP will not be responsible for any damage to the device.

6. Technical Support



Please Contact Technical Support

EZPnP USA:

1855 Northwestern

El Paso, TX 79912

1-800-828-6475

E-Mail: ezpnp@axxion.com

Or tech@ezpnp-usa.com

EZPnP Taiwan

No. 5, Lane 130, Sec.4, Hsinhai Road, Taipei 116, Taiwan

TEL: 886-2-8931-1122

FAX: 886-2-8931-1502

[Http://www.ezpnp.com](http://www.ezpnp.com)

[Http://www.ezdigimagic.com](http://www.ezdigimagic.com)

E-Mail: ezpnp@lfe.com.tw

6-1. Limited Product Warranty

EZPnP offers one-year warranty for material and workmanship of this product under normal usage condition. Product failure, excluding any misuse or handling damage, after confirmation by our technical service staff will be repaired or replaced at our discretion.

7. Specifications

Model	DM320
Supported disc media	Blank CD-R / CD-RW Disc
Supported memory card	CF [CompactFlash™ Type I/II] , MicroDrive™ , CF Adapter : SM [Smart Media™] , MMC [Multi Media Card™] , SD [Secure Digital™] , MS [Memory Stick™]
Storage capacity	1 CD-R Disc can hold the equivalent of 10 pcs of 64MB flash memory cards
Operation method	Standalone one button operation, no PC connection needed for data backup
Indicators	LED *4 [OK , Write , Fail, Disc Full]
Function key	1 [Copy] button
Audible Alert	Buzzer
PC Interface	USB 2.0 to PC and MAC
Operating System supported	Windows 98/98SE/ME/2000/XP, MAC OS 9.X and later
AC Power	100-240V(50-60Hz) universal AC adapter (DC 5V, 2A / 12V, 1.5A)
Battery Power	Optional battery pack box [for Rechargeable 1.2V AA Ni-MH Battery *4]. Battery and Charger are not provided.
Physical dimensions	182Wx90Hx275L (mm)
Net weight	1550g

EZDigiMagic is a trademark of Loyalty Founder Enterprise Co., Ltd. All other trademarks are properties of their respective owners. The specifications of the product are subject to change without any prior notice.

8.Product Application Scope

Lawful Use of Products:

This product is intended to be used solely for lawful purposes and should not be used to copy or duplicate any disks, information, data or other media that is protected by copyrights, trademarks, patents or other proprietary rights without the express consent of the owner of those rights. Purchasers and users of this product agree to indemnify and hold EZPnP harmless from and against any claims of infringement of any proprietary rights of other from use of this product.

Disclaimer:

The operating speed and performance stated in the product literature are for comparison with similar products only. The actual speed or time may vary depending on the type and quality of media. We do not offer any warranty that the speed or performance will be identical in a similar backup copying cycle.

It is user's responsibility to make sure the data on the memory card have been successfully backed up onto the disc before erasing the content of the memory card. The manufacturer and sellers of this device are not responsible for any data lost from the memory card.

